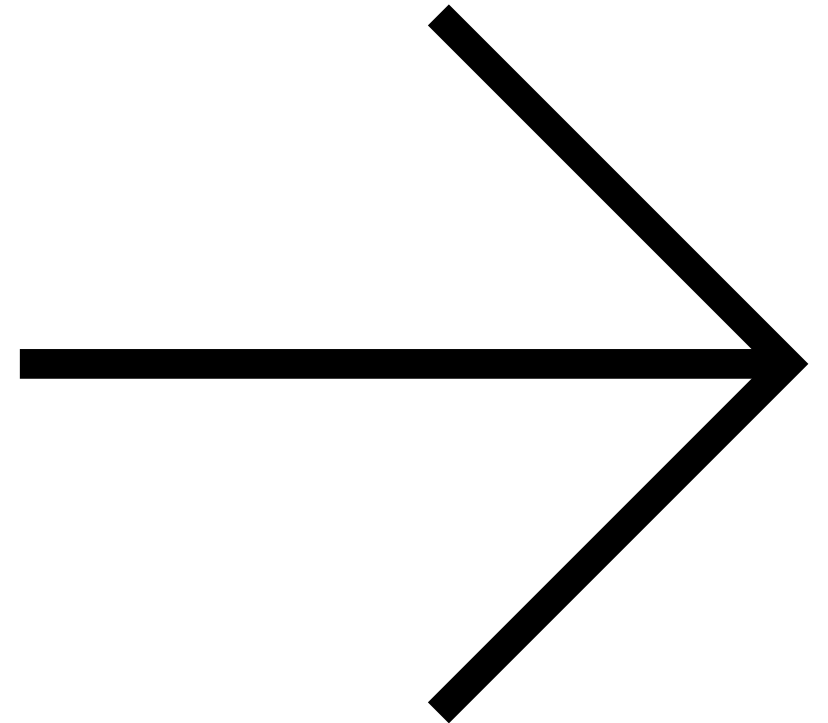


## Toby Nelmes / Portfolio

---

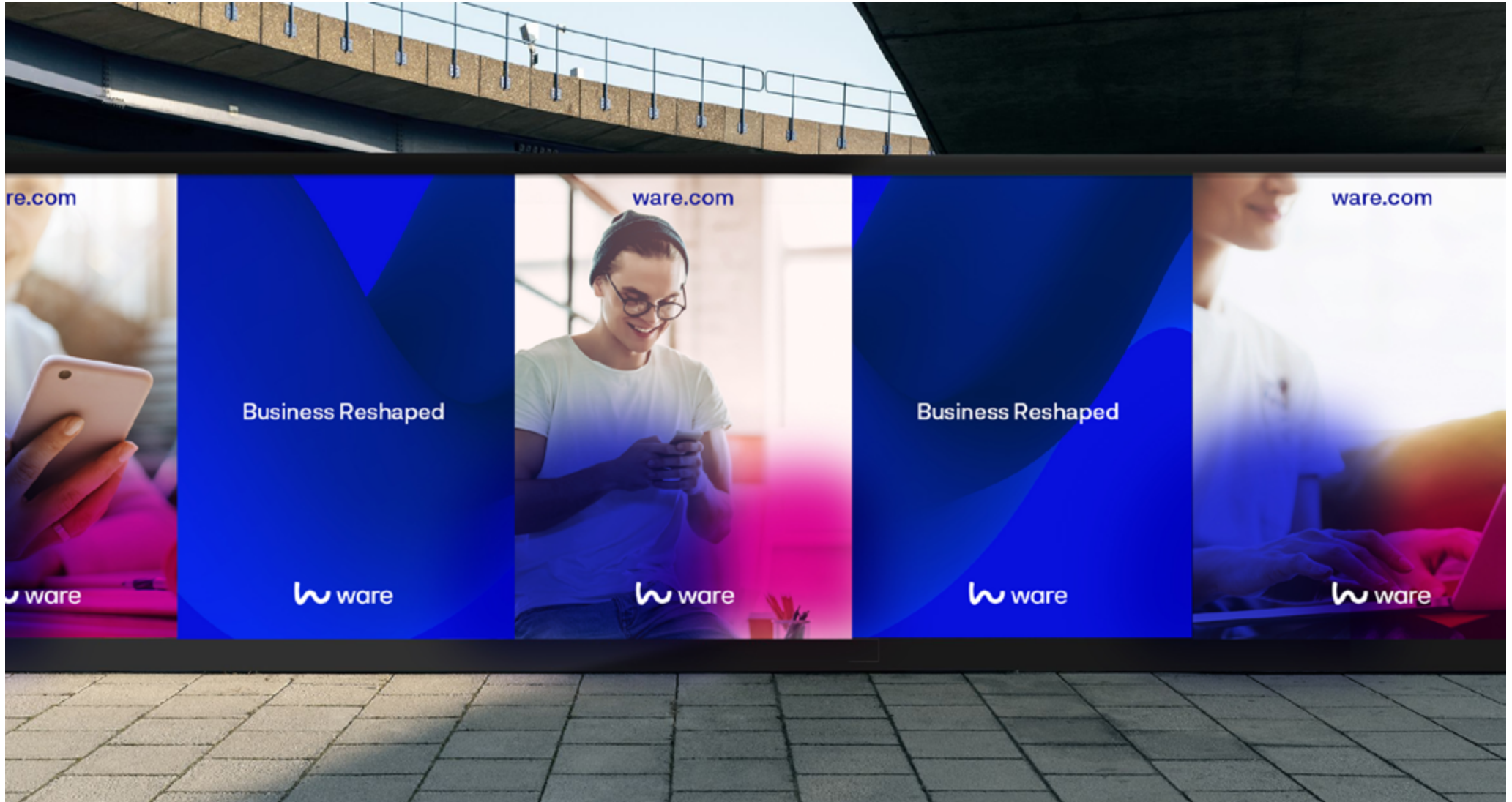
Entrepreneurial designer and creative director with in-depth experience of working on projects for the cultural, manufacturing and B2B sectors, from print to digital. Specialist in brand identity, photographic art direction, layout and typography. Self-motivated and comfortable working to tight deadlines, bringing creative flair to any project, from logo design, signage, print design, exhibition design, websites, UI design and book design.

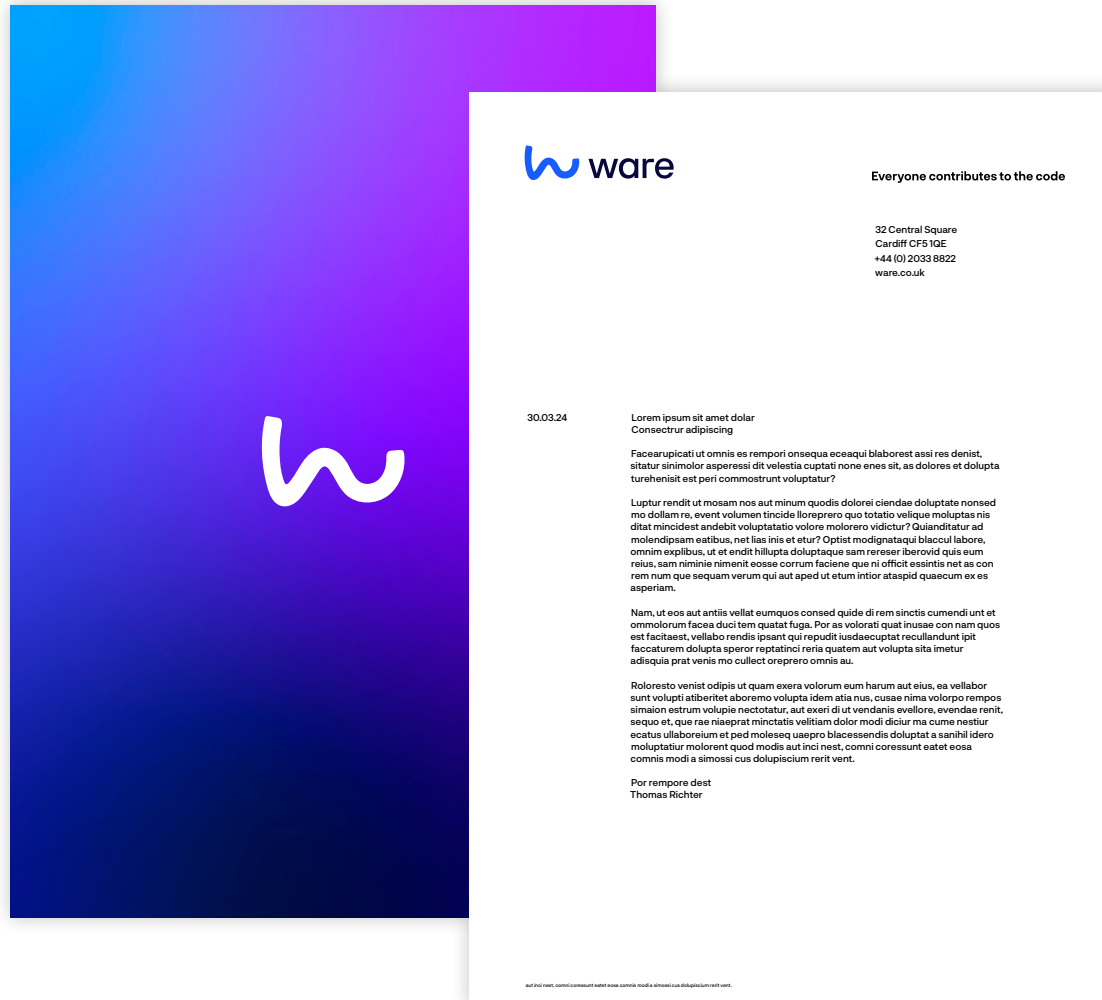


## Ware — SaaS platform brand design

Ware is a community-driven SaaS platform, built to empower workplaces and people. I designed a new brand identity and all collateral, as well as working closely with the UI/UX team on the style of the platform itself.

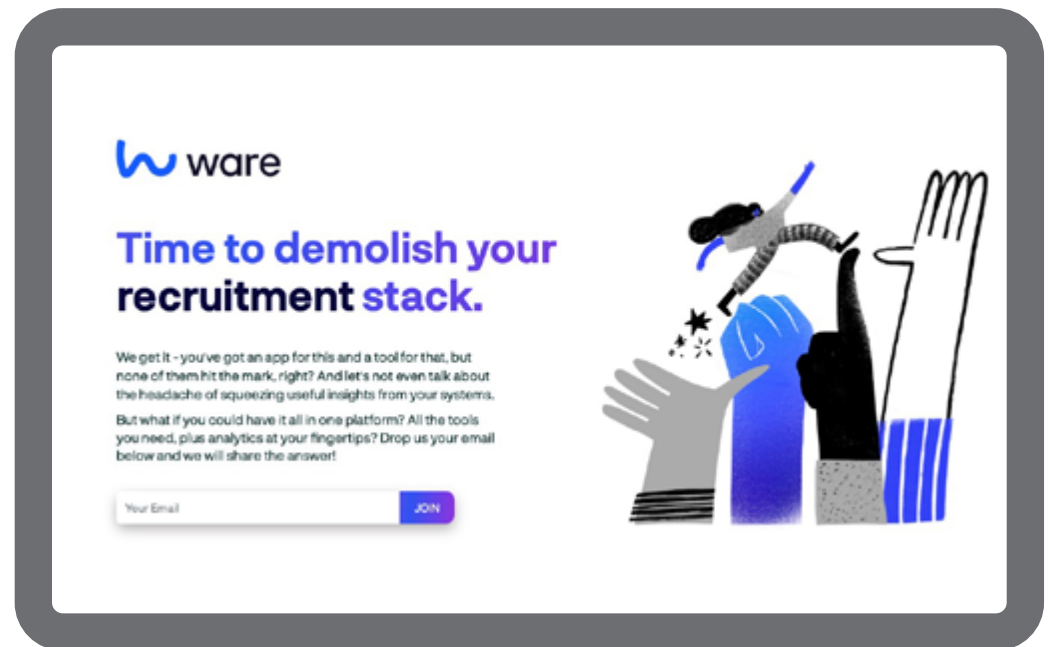
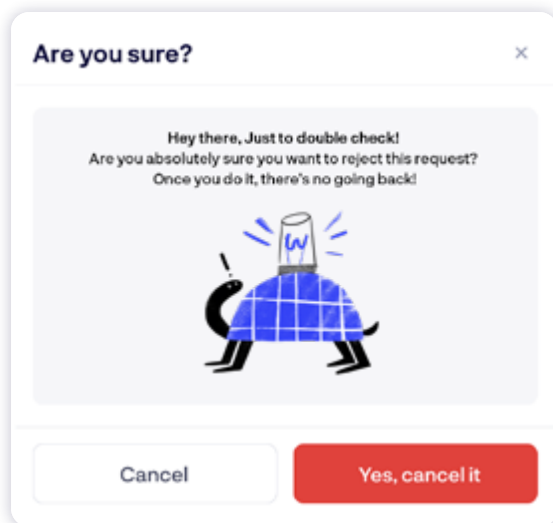
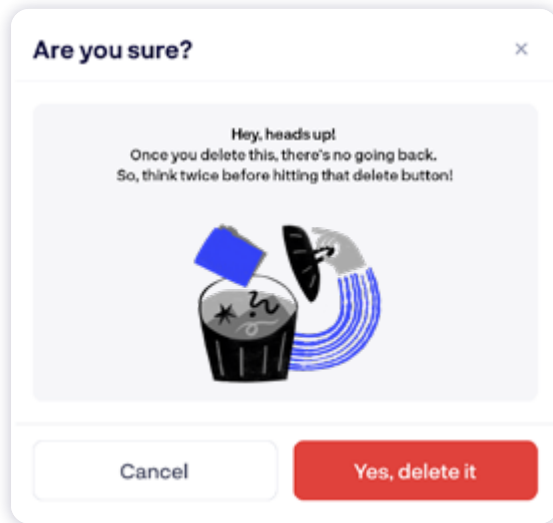
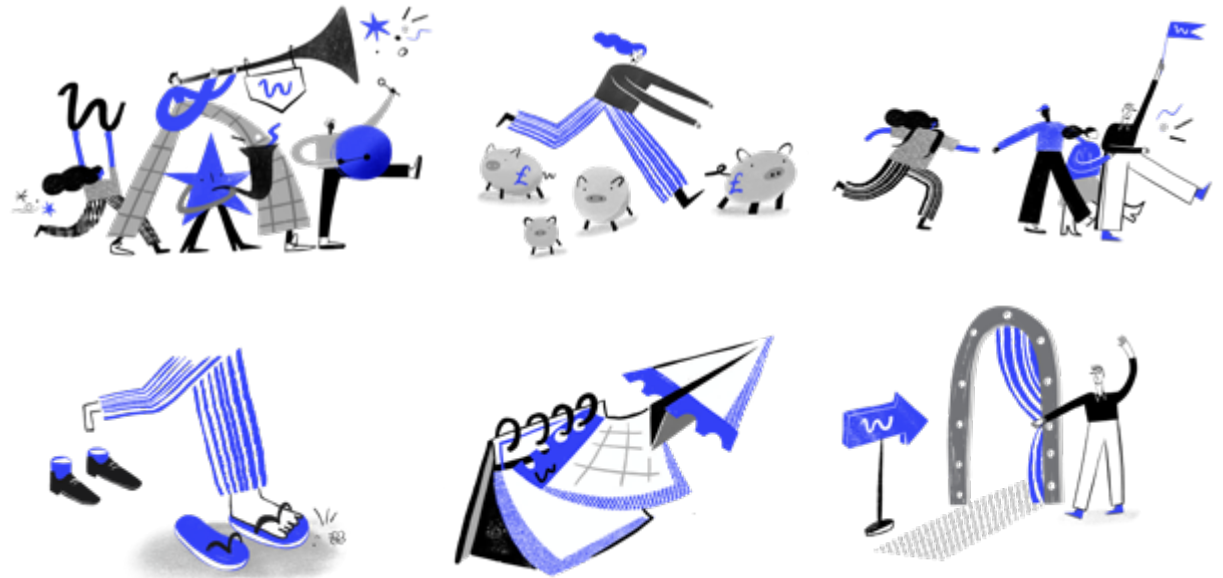






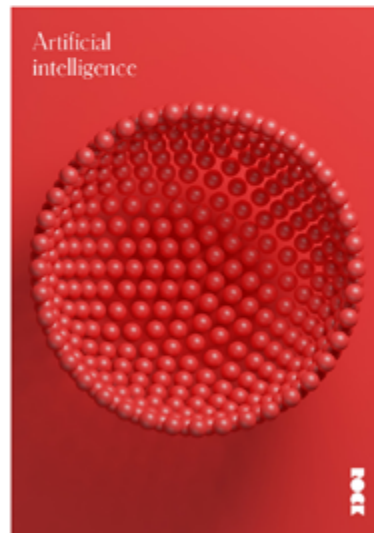
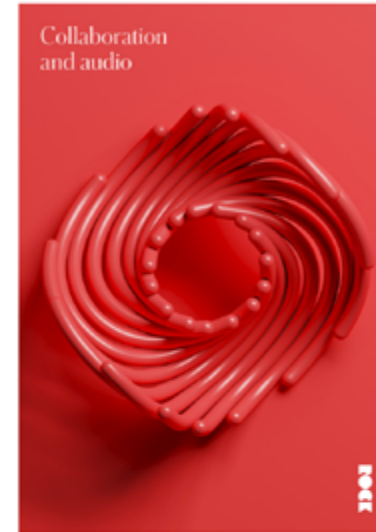


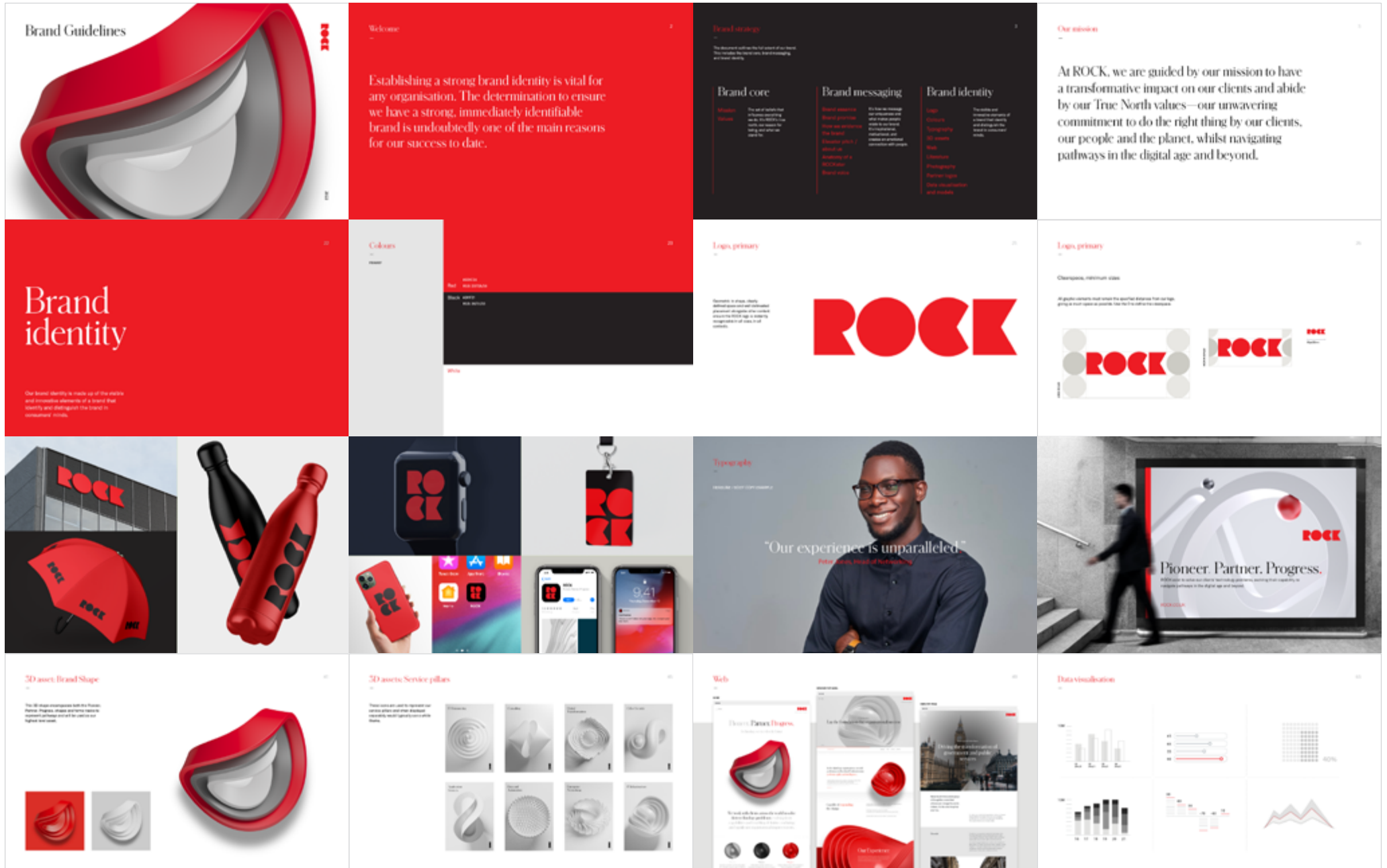
Working with [Pickle Illustration](#) to create a series of unique and engaging illustrations to highlight the various features of the platform. These illustrations will be used across the website, including modals and pull-outs, offering a fresh and creative way to explain the platform's capabilities.



## ROCK — Brand refresh, guidelines and collateral

Rock is an IT company that provides technology guidance to leading companies and organisations across the UK. I refreshed the brand and all collateral. Collaborating with 3d artist Nertil Muhaxhiri from [deepyellow.net](http://deepyellow.net) to create 3d shapes for each service offering.





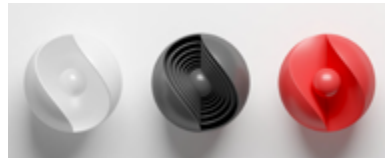
## Company Brochure



2. COMPANY BROCHURE



We work with clients across the world to solve their technology problems; evolving their capabilities and enabling definitive, enduring and significant organisational improvements.



### Pioneer.

**Exploration. Evolution. A culture of innovation.** Utilising our ecosystem of industry and technical expertise, we help clients thrive in the age of intelligence, and beyond.

### Partner.

**Collaboration. Honesty. Trust.** We work seamlessly as strategic partners to our clients, coming together as one, to solve complex problems and remove the burden of technology and change.

### Progress.

**Develop. Advance. Accomplish.** Forging transformative pathways, we deliver technology solutions that make real, distinctive and impactful organisational improvements.

## Application Services



8. APPLICATION SERVICES



## Unequivocal results

Over **10,000**

Successful consultancy projects completed since 2008.

**94.9%**

Businesses reported an improvement within 12 months of our app maturity assessment.

**40%**

Average savings for new clients of ROCK.

## Application development

Application Services









029 2030 4400 @chaptartweets chapter.org

# CHAPTER 11.18

**ART / CELFYDDYD**  
**PERFORMANCE / PERFFORMIO**  
**FILM / FFILM**  
**FOOD / DRINK / BWYD A DIOD**

029 2030 4400 @chaptartweets chapter.org

# CHAPTER 09.19

**ART I CELFYDDYD**  
**PERFORMANCE I PERFFORMIADAU**  
**FILM I FFILM**  
**FOOD DRINK I BWYD A DIOD**

**COMING SOON | YN DOD YN FFM**

**Garth Evans**  
**But, Hands Have Eyes: Six decades of sculpture**

The work of Garth Evans is integral to the history of British sculpture. His practice has largely been defined by the use of geometric, asymmetrical forms and a commitment to simple, everyday materials. Evans is noted for a body of work that offers a bridge between 1960s modernism and the typical experimentation with a broader range of materials that followed.

Experimenting with the potential of scale, weight, medium and form, Evans' work comprises both a formal and conceptual approach. He is always interested in interrogating established boundaries and, as a result, his sculptures are made from a diverse range of materials including ceramics, steel, leather and fireglass. Evans states that many of his works, even when most abstract, are 'triggers for, and combinators of, particular identifiable memories'. Ultimately, Garth Evans' works are ambiguous, multifaceted and completely original.

This exhibition, Evans' first in Wales since the 1970s, features works from the 1960s to the present day.

**About the artist**

Garth Evans was born in Cheshire in 1934. His grandfather was from Cardiff and his mother grew up in Pencaer, South Wales where Garth would spend his summers each year. Evans went on to study sculpture at the Slade School of Fine Art, London and now lives and works in North East Connecticut, USA.

Since the 1960s, Evans has exhibited widely across the UK and USA including in the influential group exhibitions 'British Sculpture '72', Royal Academy of Arts, London (1973) and 'The Condition of Sculpture', Hayward Gallery, London (1975). In 2013, artist Richard Deacon curated the survey exhibition 'Garth Evans' at Yorkshire Sculpture Park.

His work is represented in numerous collections including Tate, Metropolitan Museum of Art, New York; Museum of Modern Art, New York; the Victoria & Albert Museum and the British Museum.

Mae gwaith Garth Evans yn ganolog i hanes cerffurfaeth Prydain. Mae ei arfer wedi'i ddiffinio i raddau helaeth gan ei oedfnydd o furfiau geometrig ac arghyffwrdd, â'i ynnwylad i ddefnyddioau syml bob dydd. Mae Garth yn cychwynuau a'i greu gwaith yn ym portio rhwng moderniaeth y chwedegau a'i gwaith teyrnegol a ddyddioedd a oedd yn atgoffi ag ystod ehangach o ddefnyddioau.

Dwy atstrôf â photensial maint, pwysau, cyfrwng a rffurfiol a chryshydio. Mae ddiorddeb ganddo mewn hario trwm a sefydlog, ac o ganlyniad caiff ei gerffurfiâu eu creu o amrywiol o ddefnyddioau, gan gynnwys seirameg, dur, ledr a ffwr gwydlog. Yn ôl Garth, mae llawer o'i waith, hyd yn oed ar ei hwyf haniaethol, yn 'tarduno ac yn cynnwys atgoffon periodod'. Yn y gen draw, mae gwaith Garth Evans yn cynnwys y Tate; y Amgueddfa Gelf Ffotograffig, Efrog Newydd; y Amgueddfa Celfyddydau Modern, Efrog Newydd; Amgueddfa Ffictoria ac Albert; a' Amgueddfa Prydeinig.

**Ynglŷn â'r Artist**

Ganwyd Garth Evans yn Swydd Gaer yn 1934. Roedd ei daid o Gaerdydd, a magwyd ei fam yn Mhen-coed, ac yno y freulode Garth ei hafau bob blwyddyn. Feith Garth ymieni i astudio cerffurfiol yn Hysgus Celf Gairn Slade, Llundain ac mae'n fyw ac yn gweithio bellach yn Ne Ddwyrain Connecticut, Unol Daleithiau America. Ers y chwedegau, mae Garth wedi arddangos ei waith ledled gwledydd Prydain ac Unol Daleithiau America, gan gynnwys ym ym arddangosiadau gŵp Gyfnewid Britaidd Sculpture '72, Academi Ffrennol y Celfyddydau, Llundain (1973) a The Condition of Sculpture, Oriel Hayward, Llundain (1975). In 2013, curadoddi yr artist Richard Deacon arddangosfa arwng Garth Evans ym Hysgus Celfurfiâu Swydd Efrog. Mae ei waith i'w weld mewn nifer o gaeleddau, yn cynnwys y Tate; y Amgueddfa Gelf Ffotograffig, Efrog Newydd; y Amgueddfa Celfyddydau Modern, Efrog Newydd; Amgueddfa Ffictoria ac Albert; a' Amgueddfa Prydeinig.

**Galw'r Olygion Tawd:**  
Yn: Mawr, Sad, Sun 12-4pm, Thu, Ff 12-4pm, Mawr, Cwsat 12-4pm, Sun 12-4pm  
Yn: Mawr, Sad, Sun 12-4pm, Thu, Ff 12-4pm, Mawr, Cwsat 12-4pm, Sun 12-4pm





**Stable Yard**  
Once a derelict ruin, the Stable Yard has been transformed to become one of Cardiff's most attractive room hire facilities with eight versatile spaces, each with free WiFi, free parking and a range of catering options available. Craft workshops, fitness classes, community groups, business meetings and conferences can all be accommodated with specialist facilities from steel sinks to high definition projectors and with rooms from just £15 per hour, the Stable Yard combines premium facilities with accessible pricing. For more information call 0202021 167920 or visit [insolecourt.org](http://insolecourt.org)

**Iard y Stabiau**  
Bu'n stablau'n adfeilion ond bellach maent wedi'u trawsgrwio i greu un o arfisturonau mwyaf gennedol Caerdydd o ran ystafelloedd i'w llogi. Mae yma wyth gofod hysbys pob un yn cynnwys WiFi am ddim, parcio di-dali ac amrywiaeth o ddiwydiadau arwydd. Gellir cynnal gweithdau crefft, dosbarthiadau cadw'r hollt, gynioiau cymunedol, cyfarfodydd busnes a chynhadodau ymst, ac mae'r gynllusterau arbennigol yn cynnwys sinciau dur a pheanannau tallurio manylder uwch. Gyng ystafelloedd ar gael i'w llogi am gym lleisâd â £15 yr awr, mae'r Iard Stabiau'n cynluno cyfusteru ar yr eidd flaenaf a phreusau rhesymol lawm. Am ragor o wybodaeth ffônwch 0202021 167920 neu ewch i [insolecourt.org](http://insolecourt.org)

**Potting Shed Café**  
Open 7 days a week for delicious brunch and light lunch with plenty of home-baked cakes, the Potting Shed celebrates good, ethical and homemade food. Meals are prepared fresh and to order with seasonal menus and locally sourced ingredients with as much as possible coming from Insole Court's Community Garden. For current opening times or for more information see [insolecourt.org](http://insolecourt.org)

**Caffwr Cwt Potiau**  
Ar agor 7 ddiwrnod yr wythnos am freicwast neu ginio sgafn hynod o ffasiu gyda diogonedd o deirnosau cartref, mae'r Cwt Potiau'n falch o gynnwys bwyd cartref matholion wedi'i gynhyrchu trwy ddulliau cymunedol. Rhannir prydau'n ffres ac sy'n archeb, gyda bwydiens tymborol a chynhywion a ger yn lleol, gan ddiogelu, cymant, ag y gallwn at Ardd Gymunedol Cwrt Insole. Am yr amserau agor cyffredol neu am ragor o wybodaeth ewch i [insolecourt.org](http://insolecourt.org)

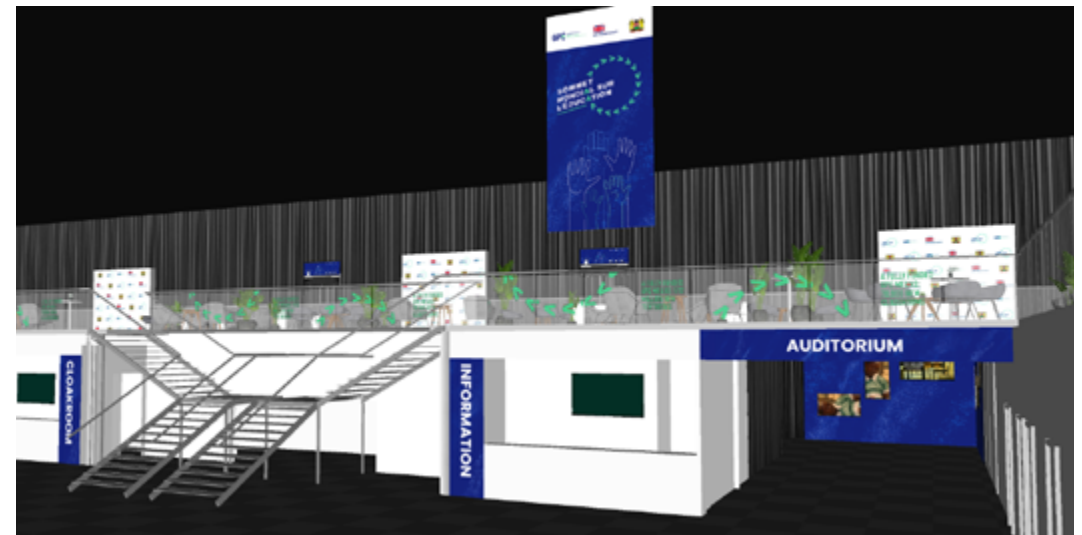
**House & History**  
Originally built as a modest family home in 1856, Insole Court was extended by the Insole family over several generations to become the unique mansion house seen today. After many years of uncertainty, the care of the house was recently transferred to a charity set up to protect it, the Insole Court Trust and is now being carefully restored, ready to welcome visitors in 2017. More information on the history of the house can be found at our Visitor Centre, at the entrance to the Stable Yard.

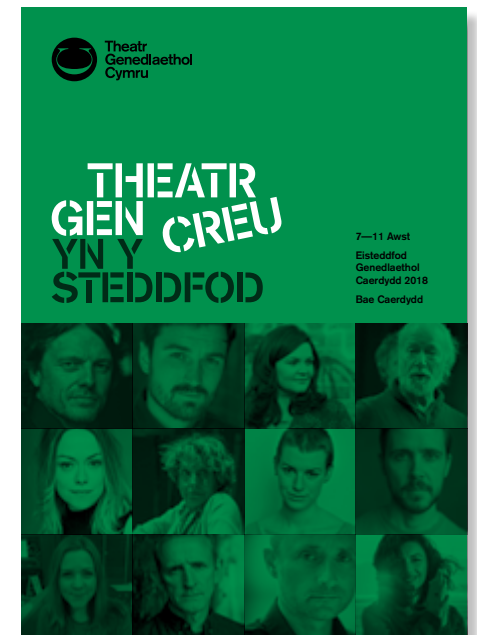
**Y Ty a'i Hanes**  
Adeiladwyd Cwrt Insole yn wreiddiol fel cartref teulu ddirnodr ym 1856, a chafodd ei ehangu gan sawl canrifoedieth o'r teulu Insole nes ffurfio'r plasty unigryw a weir heddiw. Wedi bliwyddoedd lawer o ansicrwydd, trosglyddwyd y ty yn ddiweddar i elusen a sefydlwyd i'w warchod, sef Ffundsidiolaeth Cwrt Insole, ac mae wrth'n cael ei adfer gyda gofali, yn barod i groesawu gwelwyr yn 2017. Ceir rhagor o wybodaeth am hanes y ty yn ein Canolfan Ymwelywyr, wrth y fynedfa i Iard y Stabiau.













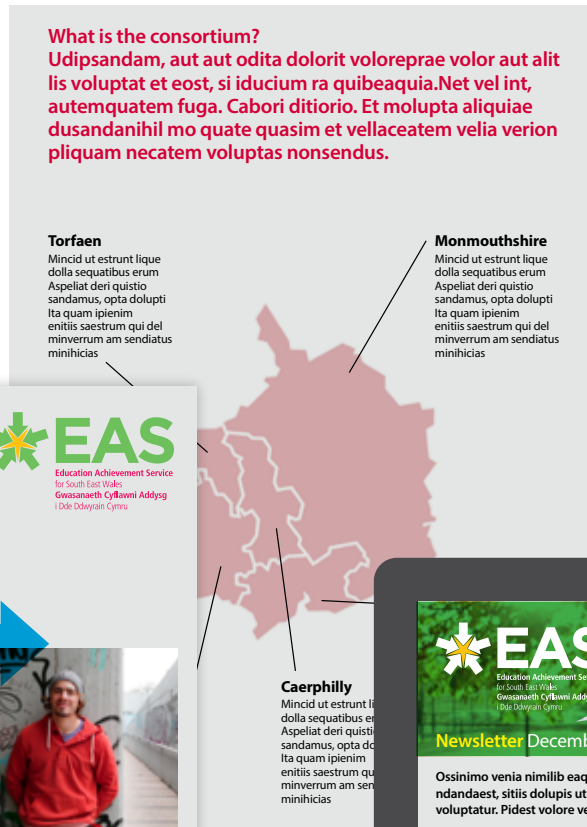
**EAS**  
Education Achievement Service  
for South East Wales  
Gwasanaeth Cyflawni Addysg  
I Dde Ddyryan Cymru

# Creative Learning through the Arts

## Dysgu Creadigol drwy'r Celfyddydau



**Estyn**



**What is the consortium?**  
Udipsandam, aut aut odita dolorit voloreprae volor aut alit  
lis voluptat et eost, si iducium ra quibeaquia. Net vel int,  
autemquam fuga. Cabori ditiorio. Et molupta aliquiae  
dusandanihil mo quate quasim et vellaceatem velia verion  
liquam necatem voluptas nonsendus.

**Torfaen**  
Mincid ut estrunt lique  
dolla sequatibus erum  
Aspeliat deri quistio  
sandamus, opta dolupti  
Ita quam ipienim  
enitiss saestrum qui del  
minverrum am sendiatius  
minihicias

**Monmouthshire**  
Mincid ut estrunt lique  
dolla sequatibus erum  
Aspeliat deri quistio  
sandamus, opta dolupti  
Ita quam ipienim  
enitiss saestrum qui del  
minverrum am sendiatius  
minihicias



**Caerphilly**  
Mincid ut estrunt lique  
dolla sequatibus erum  
Aspeliat deri quistio  
sandamus, opta dolupti  
Ita quam ipienim  
enitiss saestrum qui del  
minverrum am sendiatius  
minihicias




**EAS**  
Education Achievement Service  
for South East Wales  
Gwasanaeth Cyflawni Addysg  
I Dde Ddyryan Cymru



**EAS**  
Education Achievement Service  
for South East Wales  
Gwasanaeth Cyflawni Addysg  
I Dde Ddyryan Cymru

**Education Achievement Service  
for South East Wales**

# Newsletter December 2023



**EAS**  
Education Achievement Service  
for South East Wales  
Gwasanaeth Cyflawni Addysg  
I Dde Ddyryan Cymru

## Newsletter December 2023

Ossinimo venia nimilib eaquas inum voluptaquam el molupie  
ndandaest, silitis dolupis ut fuga. Ebit, sequi reristi voluptatia explam  
voluptatur. Pidest volore vero ea simvine lendanti inullorios.

**Meeting the teaching challenges of the future**  
Mincid ut estrunt lique dolla sequatibus erum  
Aspeliat deri quistio sandamus, opta dolupti  
Ita quam ipienim enitiss saestrum  
qui del minverrum am sendiatu

**Foundation Phase Action Plan**  
Aspeliat deri quistio sandamus, opta  
dolupti Ita quam ipienim enitiss saestrum  
qui del minverrum am sendiatius  
minihicias

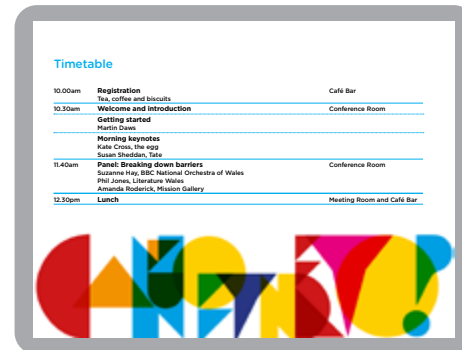
**EAS Vacancy - Principal Challenge Adviser**  
Aspeliat deri quistio sandamus, opta



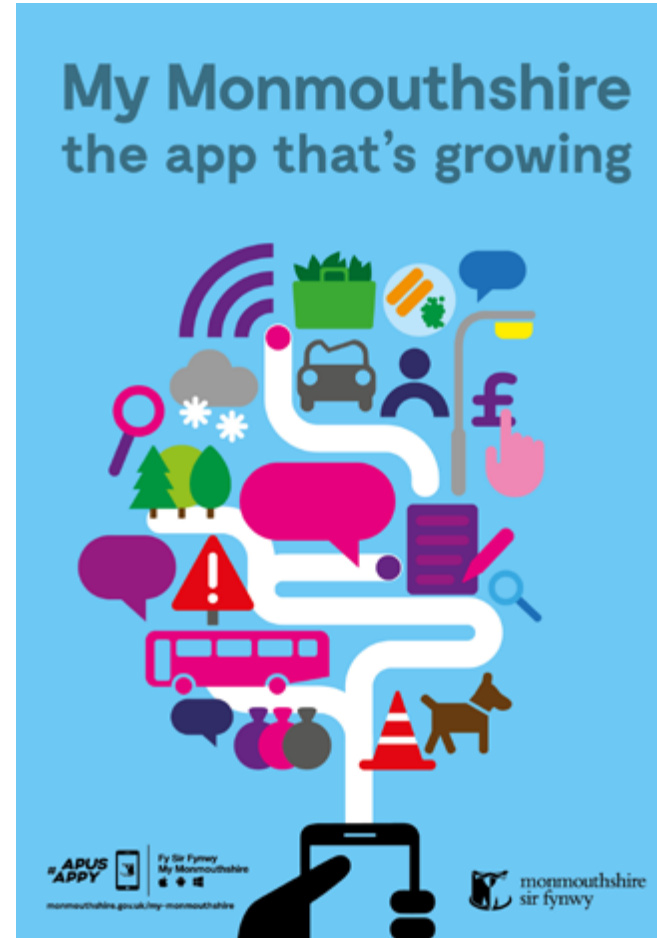


4:30pm	Heading forward the policy agenda – What is best going to support the development of family arts practice?	Café Bar
4:45pm	Martin says... (Moderated by Neil Kay & Martin Daves)	Conference Room
4:50pm	Wrap-up	
5:00pm	Head home	

Amserion		
Dydd Mercher 18 Hydref 2014, Canolfan y Dechnoleg Amgen		
10:00am	<b>Cofrestru a Rhwng</b>	
10:30am	<b>Cofrestru a chyllwyniad</b>	
	<b>Tsali</b>	
	<b>Martin Daves</b>	Amser Rhwng Cwmni a Lywodraeth i Ymgrech Celfyddydau i'r Teulu yng Nghymru
	<b>Phil Stander #1</b>	Don't Mess With My Arts, Dublin
	<b>Phil Stander #2</b>	Deborah Kermode
	<b>Deborah Kermode</b>	Chymru, Cofrestru, Celfyddydau i'r Teulu
	<b>Holl ac Aled</b>	gwybys Eira a Deborah, i den gwybys Martin David Dromble, Cofrestru, Celfyddydau i'r Teulu
11:35am	<b>Egwydd</b>	
11:50pm	<b>Panel</b>	Uwch-gyfarwyddwr <b>Jeremy Turner</b> , Cofrestru, Arddangosfa, Cwmni Theatr Ardal Goch
	<b>Nils Bennek</b> , Rheolwr Theatr, Theatr y Ffynonellau i'r Ffyrdd	
	<b>Alexa Briggs</b> , Cwybwr Cofrestru, Amgueddfa Ceredigion	
	<b>Sarah Newton</b> , Safonau Cofrestru, Amgueddfa	
1:00pm	<b>Cwmp</b>	
2:00pm	<b>Trafferion</b>	
	<b>Phil Stander #3</b>	Sammy Hertz Duke
	<b>Sammy Hertz Duke</b>	Cofrestru, Celfyddydau i'r Teulu, Rheolwr Cwmni Theatr
	<b>Holl ac Aled</b>	gwybys Jem a Sam, i den gwybys Betha Chis Roberts, Ffynonellau
3:00pm	<b>Safonau grŵp</b>	
	<b>David Aled</b> , Cofrestru i'r Celfyddydau, Cymru	
	<b>Ray GAA</b> , Cofrestru, Rheolwr Rheolwr	
	<b>Christine Hix</b> , Arddangosfa	
3:45pm	<b>Tu, coffi a salen o deilen</b>	
4:05pm	<b>Ymgrech Celfyddydau i'r Teulu - I ble haw?</b>	
	<b>Neil O'Neil</b> , Rheolwr y Ffynonellau, Ymgrech Celfyddydau i'r Teulu	
4:15pm	<b>Symud yr agenda bolliu yn ei blaen</b>	
	<b>Beth i'r Ffynonellau</b> i'w gwybys <b>grŵp celfyddydau i'r teulu orau?</b>	
	<b>Deborah Kermode</b> a <b>Deborah Kermode</b> , Cofrestru, Celfyddydau i'r Teulu	
4:45pm	<b>Mia Martin yn deud...</b>	
	<b>Deborah Kermode</b> a <b>Mia Martin</b>	
4:50pm	<b>Cwmp</b>	
5:00pm	<b>Aidref</b>	







### My Monmouthshire the app that's growing

**Quick:** My Monmouthshire is a fast way to access services or contact Monmouthshire County Council – you can simply find information or get in touch with us from your smart phone or computer

**Easy:** a simple way to find information, pay for a service (e.g. council tax, green garden waste collection or school meals etc.) or tell us about something by taking a photo or sharing a video via the app

**Your opinion matters:** My Monmouthshire is a brilliant way to give us feedback about what's great or not so great about Monmouthshire County Council

**Keep updated:** we'll send you updates on various things in Monmouthshire. Simply click to receive updates

Download My Monmouthshire from the app store today or visit [monmouthshire.gov.uk/my-monmouthshire](http://monmouthshire.gov.uk/my-monmouthshire) – you'll be 'appy







**PERSONAL  
DEFENSE  
TECHNOLOGIES**

Simple  
Powerful  
Security  
Solutions



Simple  
Powerful  
Security  
Solutions



Simple  
Powerful  
Security  
Solutions



We are Personal Defense Technologies,  
Ibusciat providel ipsandebis aceperc  
iilitias ipsantur sequam susamusam, To  
enimus quiam fuga. Ipsunto beat venisim  
ustemolupta voluptat aut debis diatenis

We are Personal Defense Technologies,  
Ibusciat providel ipsandebis aceperc  
iilitias ipsantur sequam susamusam,  
To enimus quiam fuga. Ipsunto beat  
venisim ustemolupta voluptat aut debis  
diatenisNobitia pa nulparum fugia  
dolorum la sa velenis aliqum siminveri  
ipitate escium reicil ipis ut alitia con  
exceat faccus dem ad ut min nonet

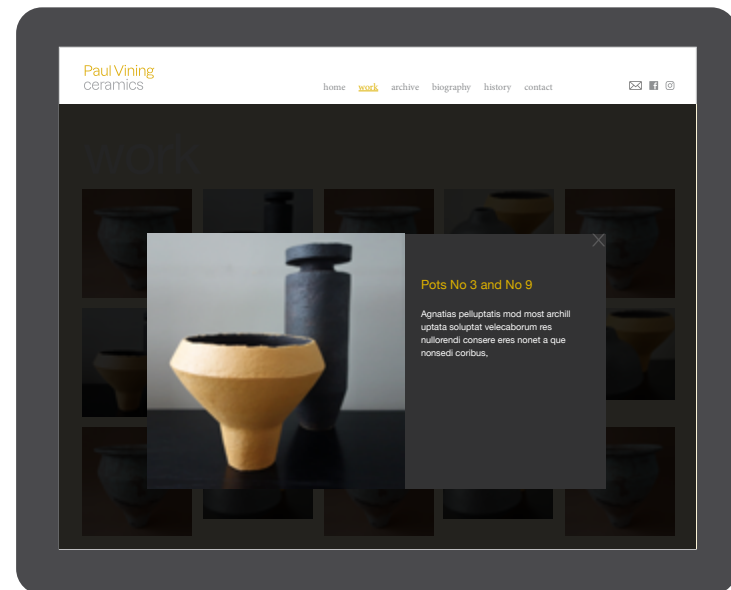
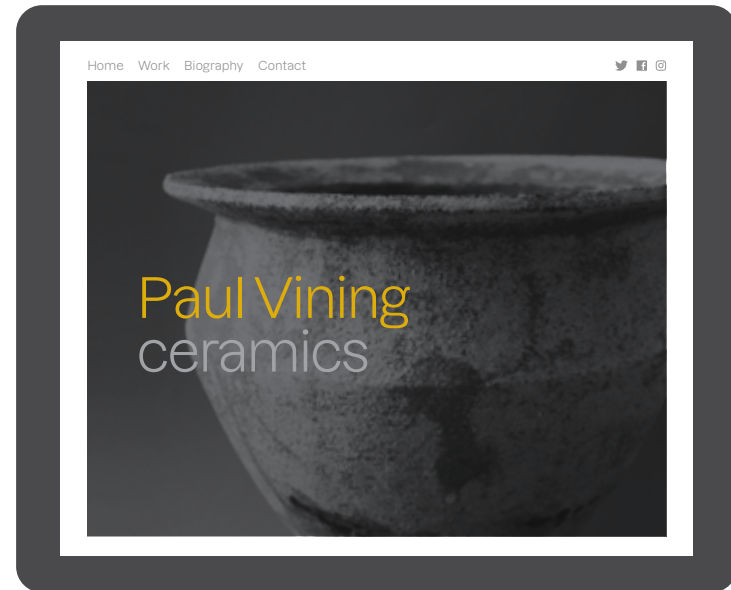
verchitatur, as as miilt, cus doluptio to  
molupta des modi undi dolupta dolum,  
et pa dolupta sinia suntios re endus  
explis et et anda verferum quis poresti  
bustios nulliqui cusam quide eum  
vernatque doloribus nobis es ma inci te  
ommolorro eiusdae sit harum facepta  
volores tumquiat estibus a sequis qui te  
doluptio modi

# Paul Vining ceramics



Paul Vining  
ceramics

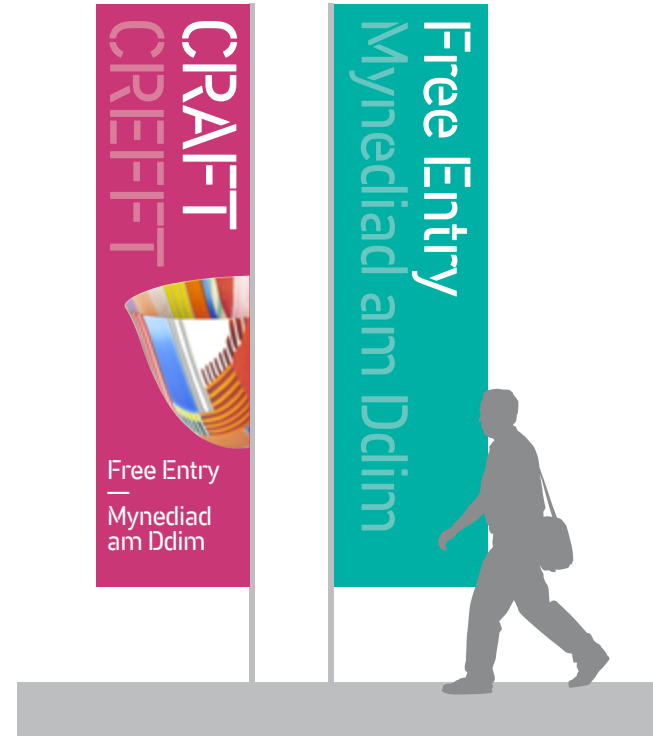
www.paulviningceramics.co.uk  
paul@paulviningceramics.co.uk  
+44 (0) 7899 928401







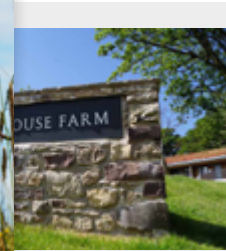






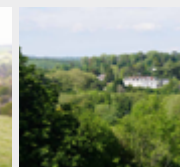
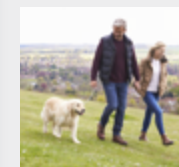






...ed to deliver homes which exceed  
...s as well as government targets.  
...g exponents of ecological and  
...ilding, refurbishments and retro  
...nd have a portfolio of high quality  
...customers. Our developments are  
...e proof and provide tomorrow's

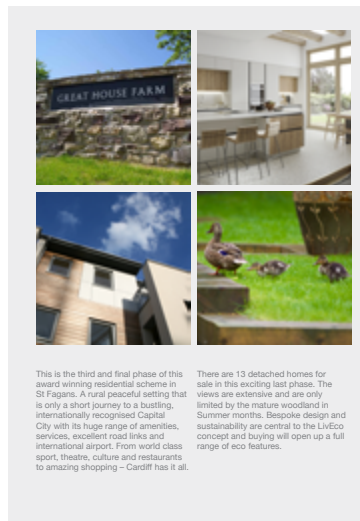
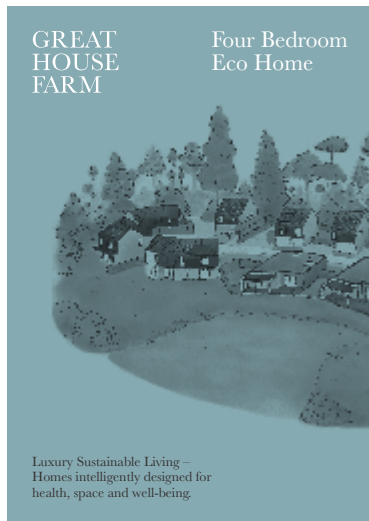
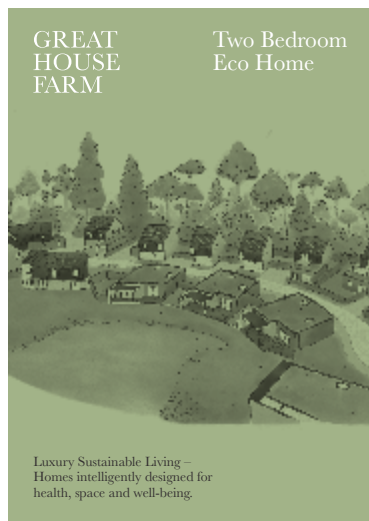
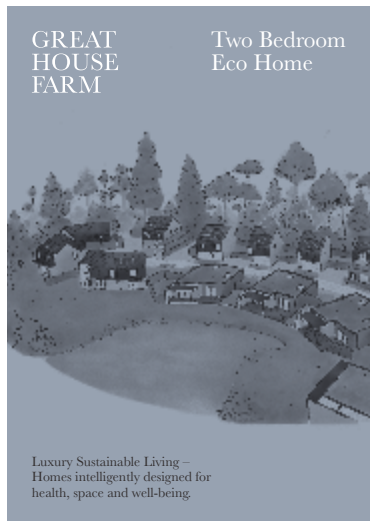
...oud that our work at Great  
...n recognised by the Welsh  
...to Housing Ministers opening



Great House Farm

*One garden and one community  
Growing together into a kingdom  
With sun and rain, turns into a circle  
Ready for fellowship*

Poem written by  
Mari George  
Commissioned as  
part of the National  
Eisteddfod of Wales  
2015





*Joules*

**HIBERNATE AT Home**

Winter is here! Our new ranges are available now que et alit que exceperum vent quat laciōis porem id earch- illes dōi que comnis aut re, omnimagnis dōs es eribust quidelesecus sinceratati am.

[WOMEN >](#) [GIRLS >](#) [MEN >](#) [BOYS >](#)

[BABY >](#) [ACCESSORIES >](#) [FOOTWEAR >](#) [CHRISTMAS >](#)

We've partnered with the Woodland Trust to tell a festive tale about our woodlands and the animals that inhabit them. [LEARN MORE >](#)

*Joules*

**ADVENTURE Outside**

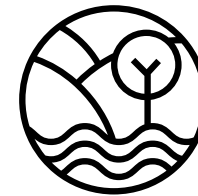
Winter is here! Our new ranges are available now que et alit que exceperum vent quat laciōis porem id earch- illes dōi que comnis aut re, omnimagnis dōs es eribust quidelesecus sinceratati am.

[WOMEN >](#) [GIRLS >](#) [MEN >](#) [BOYS >](#)

[BABY >](#) [ACCESSORIES >](#) [FOOTWEAR >](#) [CHRISTMAS >](#)

We've partnered with the Woodland Trust to tell a festive tale about our woodlands and the animals that inhabit them. [LEARN MORE >](#)





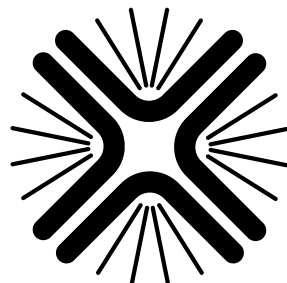
Bridgend  
Green Network  
—  
Rhwydwaith  
Gwyrdd Pen-y-bont



Adam Harris RIBA  
Architecture Consultancy



Studio Response  
Art People Place



Brilliant  
Books  
—  
Llyfrau  
Llchar

